



Kegel Sport Series - BOARDWALK

Oil Per Board: **50 uL** Oil Pattern Distance: **35 Feet** Volume Oil Total: **23.9 mL** Total Boards Crossed: **478 Boards**
 Forward Oil Total: **10.55 mL** Reverse Oil Total: **13.35 mL**
 Forward Boards Crossed: **211 Boards** Reverse Boards Crossed: **267 Boards**

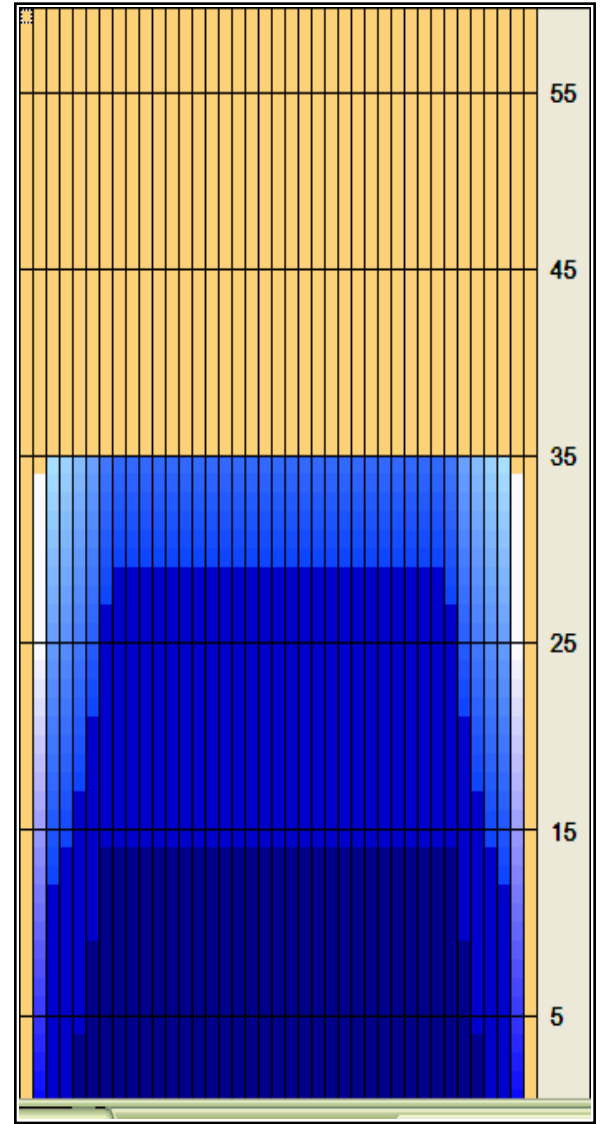
| | Start | Stop | Loads | Speed | Crossed | Start | End | Feet | T.Oil |
|---|-------|------|-------|-------|---------|-------|------|------|-------|
| 1 | 2L | 2R | 1 | 14 | 37 | 0.0 | 0.0 | 0.0 | 1,850 |
| 2 | 5L | 5R | 2 | 14 | 62 | 0.0 | 3.9 | 3.9 | 3100 |
| 3 | 6L | 6R | 2 | 18 | 58 | 3.9 | 9.0 | 5.1 | 2900 |
| 4 | 7L | 7R | 2 | 18 | 54 | 9.0 | 14.1 | 5.1 | 2700 |
| 5 | 2L | 2R | 0 | 22 | 0 | 14.1 | 26.0 | 11.9 | 0 |
| 6 | 2L | 2R | 0 | 26 | 0 | 26.0 | 35.0 | 9.0 | 0 |

Navigation: Forward Reverse More Info

| | Start | Stop | Loads | Speed | Crossed | Start | End | Feet | T.Oil |
|---|-------|------|-------|-------|---------|-------|------|------|-------|
| 1 | 2L | 2R | 0 | 30 | 0 | 35.0 | 28.0 | -7.0 | 0 |
| 2 | 8L | 8R | 1 | 18 | 25 | 28.0 | 25.5 | -2.5 | 1250 |
| 3 | 7L | 7R | 2 | 18 | 54 | 25.5 | 20.4 | -5.1 | 2700 |
| 4 | 6L | 6R | 2 | 14 | 58 | 20.4 | 16.5 | -3.9 | 2900 |
| 5 | 5L | 5R | 2 | 14 | 62 | 16.5 | 12.6 | -3.9 | 3100 |
| 6 | 4L | 4R | 1 | 14 | 33 | 12.6 | 10.7 | -1.9 | 1650 |
| 7 | 3L | 3R | 1 | 14 | 35 | 10.7 | 8.8 | -1.9 | 1750 |
| 8 | 2L | 2R | 0 | 14 | 0 | 8.8 | 0.0 | -8.8 | 0 |

Navigation: Forward Reverse More Info

Forward Oil
 Reverse Oil
 Combined Oil
 Buff Area



Arrow Zone Ratios

| Item | 2-5L:16L-20 | 6-10L:16:-20 | 11-15L:16L-20 | 16L-20:20-16R | 16L-20:20-16R | 20-16R:15-11R | 20-16R:10-6R | 20-16R:5-2R |
|------------|-------------|--------------|---------------|---------------|---------------|---------------|--------------|-------------|
| ul Arrow | 162.5 | 740 | 800 | 800 | 800 | 800 | 740 | 162.5 |
| Zone Ratio | 4.92 | 1.08 | 1 | 1 | 1 | 1 | 1.08 | 4.92 |

Track Zone Ratios

| Item | 3L-7L:18L-18R | 8L-12L:18L-18R | 13L-17L:18L-18R | 18L-18R:17R-13R | 18L-18R:12R-8R | 18L-18R:7R-3R |
|------------------|----------------------|---------------------|---------------------|----------------------|---------------------|----------------------|
| Description | Outside Track:Middle | Middle Track:Middle | Inside Track:Middle | Middle: Inside Track | Middle:Middle Track | Middle:Outside Track |
| Track Zone Ratio | 2.11 | 1 | 1 | 1 | 1 | 2.11 |

