



Kegel Recreation Series - MAIN STREET

Oil Per Board: 50 uL Oil Pattern Distance: 40 Feet Volume Oil Total: 19.3 mL Total Boards Crossed: 386 Boards

Forward Oil Total: 8.55 mL Reverse Oil Total: 10.75 mL

Forward Boards Crossed: 171 Boards Reverse Boards Crossed: 215 Boards

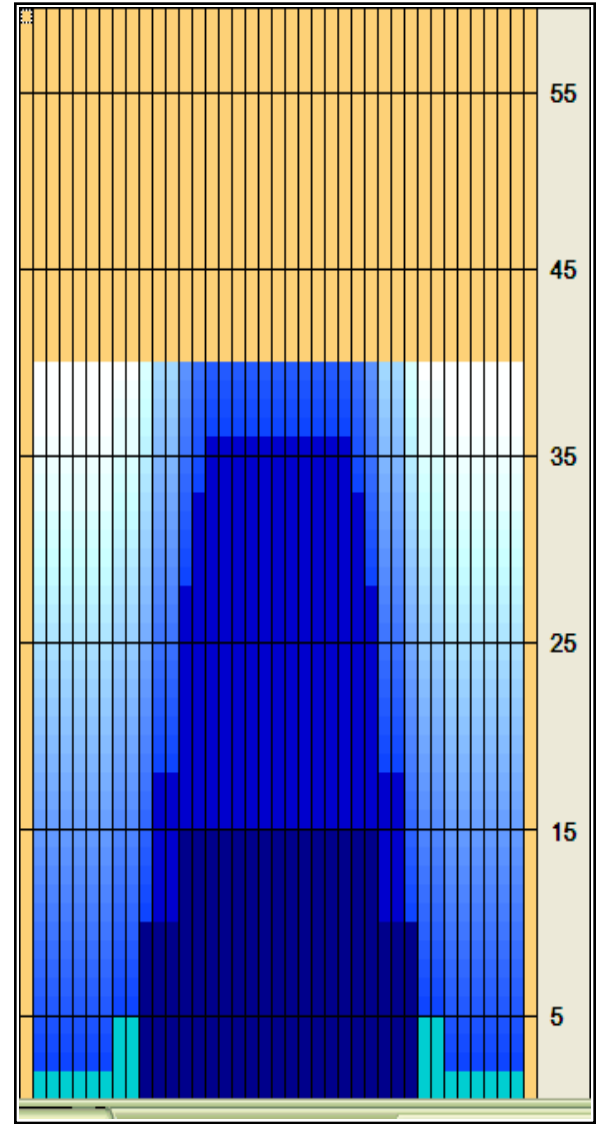
	Start	Stop	Loads	Speed	Crossed	Start	End	Feet	T.Oil
1	2L	2R	2	18	74	0.0	2.5	2.5	3,700
2	8L	8R	1	18	25	2.5	5.0	2.5	1250
3	10L	10R	2	18	42	5.0	10.1	5.1	2100
4	13L	13R	2	18	30	10.1	15.2	5.1	1500
5	2L	2R	0	18	0	15.2	24.0	8.8	0
6	2L	2R	0	22	0	24.0	33.0	9.0	0
7	2L	2R	0	30	0	33.0	40.0	7.0	0

Navigation: Forward Reverse More Info

	Start	Stop	Loads	Speed	Crossed	Start	End	Feet	T.Oil
1	2L	2R	0	30	0	40.0	35.0	-5.0	0
2	15L	15R	1	22	11	35.0	31.9	-3.1	550
3	14L	14R	2	18	26	31.9	26.8	-5.1	1300
4	13L	13R	4	18	60	26.8	16.6	-10.2	3000
5	11L	11R	4	14	76	16.6	8.7	-7.9	3800
6	10L	10R	2	10	42	8.7	5.9	-2.8	2100
7	2L	2R	0	10	0	5.9	0.0	-5.9	0

Navigation: Forward Reverse More Info

Forward Oil
Reverse Oil
Combined Oil
Buff Area



Arrow Zone Ratios

Item	2-5L:16L-20	6-10L:16:-20	11-15L:16L-20	16L-20:20-16R	16L-20:20-16R	20-16R:15-11R	20-16R:10-6R	20-16R:5-2R
ul Arrow	100	170	780	1000	1000	780	170	100
Zone Ratio	10	5.88	1.28	1	1	1.28	5.88	10

Track Zone Ratios

Item	3L-7L:18L-18R	8L-12L:18L-18R	13L-17L:18L-18R	18L-18R:17R-13R	18L-18R:12R-8R	18L-18R:7R-3R
Description	Outside Track:Middle	Middle Track:Middle	Inside Track:Middle	Middle: Inside Track	Middle:Middle Track	Middle:Outside Track
Track Zone Ratio	10	2.86	1.04	1.04	2.86	10

